

# PURITY STEAM



## OPTIMUM WATER QUALITY FOR STEAM COOKING AND BAKING

With the PURITY Steam, calcium and magnesium ions are selectively removed from the drinking water using the flow method via an ion exchanger. Furthermore, the filter material binds metals such as lead and copper and reduces substances that negatively affect taste and aroma as well as organic contaminants. The increased flow and reduced pressure loss also allow the smooth operation of large combi steamers and ovens.

### OPT FOR CLEAN. OPT FOR GREEN.



Environmental protection and recycling are part of the BRITA corporate philosophy. BRITA established a recycling programme for exhausted filter cartridges. Since 1992 all parts of BRITA cartridges can be completely reprocessed so that the materials can be recycled.

### THE BENEFITS TO YOU

- Baked products, fish, meat and vegetables are cooked to their best
- High capacity with reliable reduction of limescale formation
- Fine steam jets remain open longer
- Bypass settings specially adapted to different steamers and ovens
- Improved flow performance of up to 500 l/h with 1 bar pressure loss



## SYSTEMATIC FILTER TECHNOLOGY

### 1 Pre-filtration

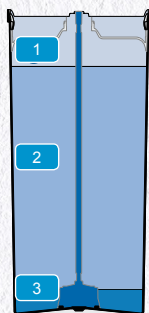
A fleece at the inlet reliably retains coarse particles and, with its laminar water distribution, ensures a high utilisation of the downstream filter medium – independent of water flow rates and pressure surges.

### 2 Carbonate hardness reduction

The filter medium reduces the carbonate hardness content in a targeted way. As a result, unwanted limescale formation is prevented. With the integrated activated carbon element, chlorine, chlorine compounds and organic elements are reduced. In this way unwanted taste and aroma elements do not enter the filtrate.

### 3 Fine filtration

At the end of the filtration process a fleece retains any fine particles.



The illustration serves as explanation of the filter technology. It is not to scale.

## QUALITY AND SAFETY

### Optimum water quality

Outstanding and consistent water quality – free of unwanted taste and aroma elements.

### Maximum product safety

For uninterrupted operation and safe use.

### Simple to use

Operation is simpler and easier than ever.

The food safety of BRITA Professional water filter products is tested and monitored by independent institutes. Electronic components are CE-certified and labelled.



ACS  
conform



KTW  
tested\*



\*applies to all materials in contact with water

PURITY Steam	450	600	1200
Technology	decarbonisation		
Capacity <sup>1</sup> with a carbonate hardness of 10 °dH (bypass position 1)	3,680 l	5,771 l	10,800 l
Comparable capacity according to DIN 18879-1:2007: The comparable capacity is a standardised indicator to facilitate comparison of different filters. The comparable capacity is determined under extreme conditions. Normally the usable capacity in practical operation is clearly higher than the comparable capacity and may vary greatly depending on the usage conditions.			
Comparable capacity	2,754 l	4,734 l	9,521 l
Max. operating pressure	6.9 bar		
Water intake temperature	4–30 °C		
Flow at 1 bar pressure loss	max. 500 l/h		
Nominal flow	max. 120 l/h		
Pressure loss at nominal flow	0.36 bar		
Dimensions (height/width)	408/249 mm	520/249 mm	550/288 mm
Weight (dry/wet)	10/12 kg	12/15 kg	18/24 kg
Connections (input/output)	G1"/G3/4"		
Operating position	horizontal or vertical		
Operation	Use after inhouse softening units possible		

PURITY Steam	Order number		
New filter (complete system with filter cartridge) with measuring and display unit	1002912	1002918	1002923
New filter (complete system with filter cartridge) without measuring and display unit	1000654	1000245	1000226
Replacement cartridge	1000653	1000252	1000231

Accessories	Order number
BRITA FlowMeter 100–700 A	298905
Carbonate hardness test kit	710800

Appropriate hoses and hose sets from our comprehensive FlexConnect range as well as other accessories can be found in our price list.

#### Explanatory notes

<sup>1</sup>The capacities given have been tested and calculated on the basis of normal application and machine conditions. Due to external influences (e.g. variations in raw water quality and/or machine type), deviations from these results can occur.

Only drinking quality water may be used as the water supply for BRITA water filters.

## FOR MORE INFORMATION, CONTACT:

BRITA GmbH  
Heinrich-Hertz-Straße 4  
65232 Taunusstein  
Germany  
Tel.: +49 6128 746-5765  
Fax: +49 6128 746-5010  
professional@brita.net  
www.professional.brita.net

BRITA Water Filter Systems Ltd.  
BRITA House | 9 Granville Way  
Bicester | Oxfordshire OX26 4JT  
Great Britain  
Tel.: +44 844 742-4990  
Fax: +44 844 742-4902  
clientservices@brita.co.uk  
www.brita.co.uk

## FILTER MANAGEMENT APP



Download our free of charge BRITA Professional FilterManager app and get a reminder for your next filter exchange – automatically, wherever you are. For smartphone and tablets. For more information please visit: [professional.brita.net/app](http://professional.brita.net/app)